



LPA Retail Systems Inc.

# LPA Retail System's 2013 User Fair

Delivering Bottom Line Results Since 1992

## The Custom Meat Shop New Features

Presented by:  
Ben Wernette  
Senior Application Specialist  
LPA Retail Systems, Inc.



LPA User Fair 2013

# Agenda

- Review latest features added to the Meat Module
- Review previous features that you may not know
- Q & A – Time permitting



# New Features

- Introducing Meat Mod E-Z



## New Features

- Introducing Meat Mod E-Z
  - Uses a combination of Send Keys and Counterpoint's Item Line Custom Prompts (v8.3.9)



## New Features

- Introducing Meat Mod E-Z
  - Uses a combination of Send Keys and Counterpoint's Item Line Custom Prompts (v8.3.9)
  - Stick around to learn how to do some of this yourself in my 'Tips and Q&A' session



## New Features

- Introducing Meat Mod E-Z
- Processing report by Item



IFA User Fair 2013

## New Features

- Introducing Meat Mod E-Z
- Processing report by Item

Special Handling Instructions:	Ticket #	Notes
	1-700030	Additional cheese in summer sausage

Item #	Description	Ticket #	Weight	Species	Trim Needed
100539	VENISON SUMMER SAUSAGE	1-700011	18 LB	DEER	12.06
		1-700018	34 LB	DEER	22.78
		1-700025	10 LB	DEER	6.70
		1-700030	18 LB	DEER	12.06
		1-700033	2 LB	DEER	1.34
		1-700036	20 LB	DEER	13.40
		<b>Total:</b>	<b>102</b>		<b>68.34</b>
100541	VEN JALAPENO CHEDDAR SS	1-700021	10 LB	DEER	6.70
		1-700026	20 LB	DEER	13.40
		1-700032	20 LB	DEER	13.40
		<b>Total:</b>	<b>50</b>		<b>33.50</b>
100542	VENISON POLISH SAUSAGE	1-700018	34 LB	DEER	17.00
		1-700021	24 LB	DEER	17.00



IFA User Fair 2013

## New Features

- Introducing Meat Mod E-Z
- Processing report by Item
- Updated Cutting Sheet



User Fair 2013

## New Features

- Introducing Meat Mod E-Z
- Processing report by Item
- Updated Cutting Sheet

Old

### Cutting Instructions:

Round Tenderized	Tenderized	No				
Round Steak	# IN PKG	2	THICKNESS	1/2"		
T-Bones	# IN PKG	3	THICKNESS	3/4"		
SIRLOIN	# IN PKG	1	THICKNESS	1/4"		
Ribeye	# IN PKG	1	THICKNESS	1/4"		
Chuck	% ROAST	0	% STEAK	0	% HB	0
Chuck Steak	# IN PKG	1	THICKNESS	1/4"		
HAMBURGER	% HAMBURG	25	% DRIED BF	25	% WMJ	50
Patties	# in Pkg	1	Pct	25		
Qty	Unit flag	Item #	Description			Qty



User Fair 2013

## New Features

- Introducing Meat Mod E-Z
- Processing report by Item
- Updated Cutting Sheet

**New**

**Cutting Instructions:**

Round Tenderized	Tenderized	No				
Round Steak	# IN PKG	2	THICKNESS	1/2"		
T-Bones	# IN PKG	3	THICKNESS	3/4"		
SIRLOIN	# IN PKG	1	THICKNESS	1/4"		
Ribeye	# IN PKG	1	THICKNESS	1/4"		
Chuck	% ROAST	0	% STEAK	0	% HB	0
Chuck Steak	# IN PKG	1	THICKNESS	1/4"		
HAMBURGER	% HAMBURG	25	% DRIED BF	25	% WMJ	50
Patties	# in Pkg	1	Pct	25		



User Fair 2013

## New Features

- Introducing Meat Mod E-Z
- Processing report by Item
- Updated Cutting Sheet
- Weigh & Label 'sticky' fields



User Fair 2013

## Previous Features – Point of Sale



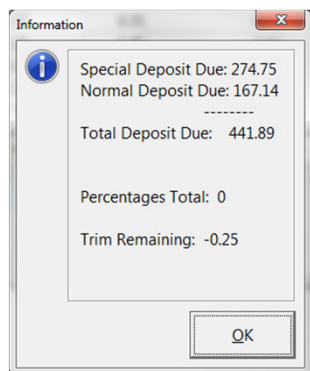
## Previous Features – Point of Sale

- Suggested deposit amount



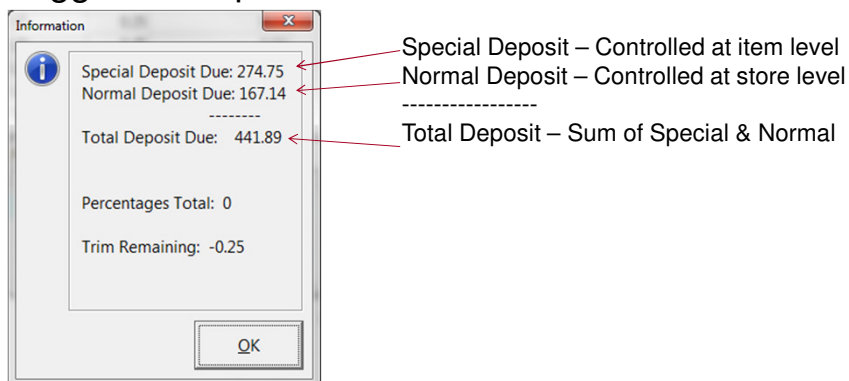
## Previous Features – Point of Sale

- Suggested deposit amount



## Previous Features – Point of Sale

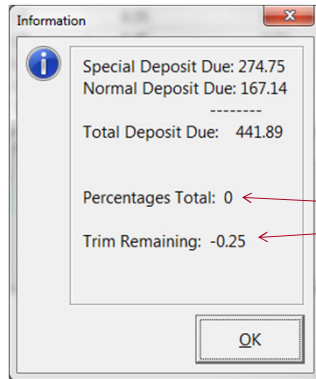
- Suggested deposit amount





## Previous Features – Point of Sale

- Suggested deposit amount



Also shows sum of items with PCT unit and another chance to see the trim remaining.



## Previous Features – Point of Sale

- Suggested deposit amount
- Clone orders



## Previous Features – Point of Sale

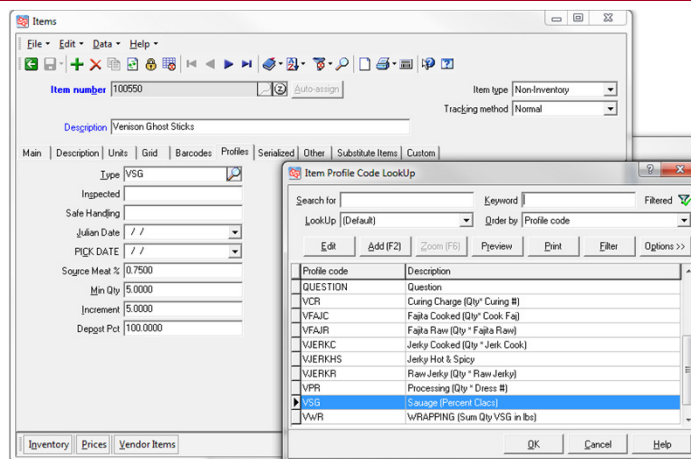
- ❑ Suggested deposit amount
- ❑ Clone orders
- ❑ Additional profile codes



## Previous Features – Point of Sale

A screenshot of a software dialog box titled "Ticket Profile Fields". The dialog contains various input fields and controls for managing ticket profiles. Fields include: Game, Trip Weight, Dress Weight, Lye Weight, Jerky Cooked, Jerky HS, Jerky Raw, Fajita Cooked, Fajita Raw, Curing Weight, Tag #, License #, Freezer, Owner, Curing No., Heads, Kind, LBS Remaining, Small Tub, Large Tub, Haggling, Cutter, Done Date, Lock Order, Recall Order, Addl Lic 1-10, Referred By, No of Calls, Last Call, and Call Notes. At the bottom right are buttons for OK, Cancel, and Help.

## Previous Features – Point of Sale



IPA User Fair 2013

## Previous Features – Point of Sale

- Suggested deposit amount
- Clone orders
- Additional profile codes
- Updated Point of Sale forms

IPA User Fair 2013

# Previous Features – Point of Sale

□ Old form:

Meat Market  
Pork Order

1-700003

Pork

Page: 1

Sold to: Testing  
1234 Main St  
Somewhere, MN 55555  
HP: 952-555-1234  
testing@test.com

Customer #: TESTING  
Sales Rep: LPA  
Owner: -

Request Date:  
Done Date:

Ticket date: 8/2/11  
Order #: 1-700003  
Dress Weight: 0.0  
Trim Weight:  
Live Weight:  
Tag #:  
License #:  
Freezer #:  
Curing #:  
Curing Weight:  
Kind:  
Heads:

**Cutting Instructions:**

HEAD	TYPE 1	TRIM	TYPE 2	N/A	
SHOULDER PCT	% STEAK	25	% ROAST	25	% SAUSAGE 50
SHOULDER STEAK	# IN PKG	4	THICKNESS	3/4"	
SHOULDER ROAST	AMT	2			



# Previous Features – Point of Sale

□ New form:

Meat Market  
Pork Order

1-700003

Pork

Page: 1

Customer #: TESTING

Sold to: Testing  
1234 Main St  
Somewhere, MN 55555  
HP: 952-555-1234  
testing@test.com

Ticket Date: 08/02/2011  
Order #: 1-700003  
Sales Rep: LPA  
Dress Weight: 0.0

**Cutting Instructions:**

HEAD	TYPE 1	TRIM	TYPE 2	N/A	
SHOULDER PCT	% STEAK	25	% ROAST	25	% SAUSAGE 50
SHOULDER STEAK	# IN PKG	4	THICKNESS	3/4"	
SHOULDER ROAST	AMT	2			
LOIN	# IN PKG	2	THICKNESS	1/2"	
HAM	TYPE	FRESH-SLICE	PCT	100	
LARD	LARD	NO			
HOCKS	HOCKS	NO	SMOKED	N/A	
RIBS	RIBS	YES			
NECK BONES	NECK BONES	NO			
TRIMMINGS	% PLAIN	75	% SEASON	25	% BR. LINK 0

Qty	Unit flag	Description	Item #	Price	Ext price
1	EACH	BO	BONE DISPOSAL	\$10.00	10.00



## Previous Features – Point of Sale

- ❑ Suggested deposit amount
- ❑ Clone orders
- ❑ Additional profile codes
- ❑ Updated Point of Sale forms
- ❑ Call Log and report enhanced with email option



## Previous Features – Point of Sale

- ❑ Suggested deposit amount
- ❑ Clone orders
- ❑ Additional profile codes
- ❑ Updated Point of Sale forms
- ❑ Call Log and report enhanced with email option
- ❑ Game Warden report



## Previous Features – Point of Sale

- Suggested deposit amount
- Clone orders
- Additional profile codes
- Updated Point of Sale forms
- Call Log and report enhanced with email option
- Game Warden report
- Reprint Orders from History



## Previous Features – Point of Sale

- Suggested deposit amount
- Clone orders
- Additional profile codes
- Updated Point of Sale forms
- Call Log and report enhanced with email option
- Game Warden report
- Reprint Orders from History
- Email receipts



## Previous Features – Point of Sale

- ❑ Suggested deposit amount
- ❑ Clone orders
- ❑ Additional profile codes
- ❑ Updated Point of Sale forms
- ❑ Call log and report
- ❑ Game Warden report
- ❑ Reprint Orders from History
- ❑ Email receipts
  - Before you can send receipts, reports, or customer statements via e-mail, you must define a valid SMTP host name for your e-mail system or provider, along with other e-mail settings, using the Management Console on your Counterpoint server.



IPA User Fair 2013

## Previous Features – Lot Tracking



IPA User Fair 2013

## Previous Features – Lot Tracking

- Lot tracking from Purchasing...



## Previous Features – Lot Tracking

- Lot tracking from Purchasing...
- ...to Point of Sale





## Previous Features – Lot Tracking

- Lot tracking from Purchasing...
- ...to Point of Sale
- Recipes with custom assembly



## Previous Features – Lot Tracking

- Lot tracking from Purchasing...
- ...to Point of Sale
- Recipes with custom assembly
- Auto adjustments of trim from Point of Sale



## Previous Features – Weigh & Label



## Previous Features – Weigh & Label

- Supports lot tracking



## Previous Features – Weigh & Label

- Supports lot tracking

**CHEDDARWURST**  
 Ingredients: Pork, Cheddar Cheese, more ingredients.

		Net Wt. 0.59
		Price/lb: 3.69
		Total Price: <b>\$2.18</b>



User Fair 2013

## Previous Features – Weigh & Label

- Supports lot tracking

**CHEDDARWURST**  
 Ingredients: Pork, Cheddar Cheese, more ingredients.

Random weight barcode

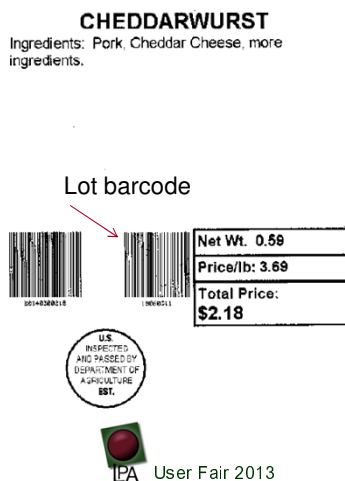
		Net Wt. 0.59
		Price/lb: 3.69
		Total Price: <b>\$2.18</b>



User Fair 2013

## Previous Features – Weigh & Label

- Supports lot tracking



## Previous Features – Weigh & Label

- Supports lot tracking
- Save to Order



## Previous Features – Weigh & Label

- Supports lot tracking
- Save to Order
- Edit 'Save to Order' lines from Weigh & Label



## Previous Features – Weigh & Label

- Supports lot tracking
- Save to Order
- Edit 'Save to Order' lines from Weigh & Label
- Box label, box break summary



## Previous Features – Weigh & Label

- Supports lot tracking
- Save to Order
- Edit 'Save to Order' lines from Weigh & Label
- Box label, box break summary

**Meat Market**

Phn:



**Order: -**

**Box: 1**

**Name:**

Item	Descr	Qty	Net_wt
1234	Test random	3	37.48



User Fair 2013

## Previous Features – Weigh & Label

- Supports lot tracking
- Save to Order
- Edit 'Save to Order' lines from Weigh & Label
- Box label, box break summary
- Support more than three label designs including multiple box labels



User Fair 2013

## Previous Features – Weigh & Label

- Supports lot tracking
- Save to Order
- Edit 'Save to Order' lines from Weigh & Label
- Box label, box break summary
- Support more than three label designs including multiple box labels
- Multiple Weigh & Label station support



## Previous Features – Weigh & Label

- Supports lot tracking
- Save to Order
- Edit 'Save to Order' lines from Weigh & Label
- Box label, box break summary
- Support more than three label designs including multiple box labels
- Multiple Weigh & Label station support
- Printer support



## Previous Features – Inventory

- Physical Count of Random Weight Barcoded Product



## Latest Features – Q & A

- Time permitting





# Thank you!

- Thank you for your time!
- Please remember to fill out your survey.



IPA User Fair 2013